

## Power Platform vs. RDP

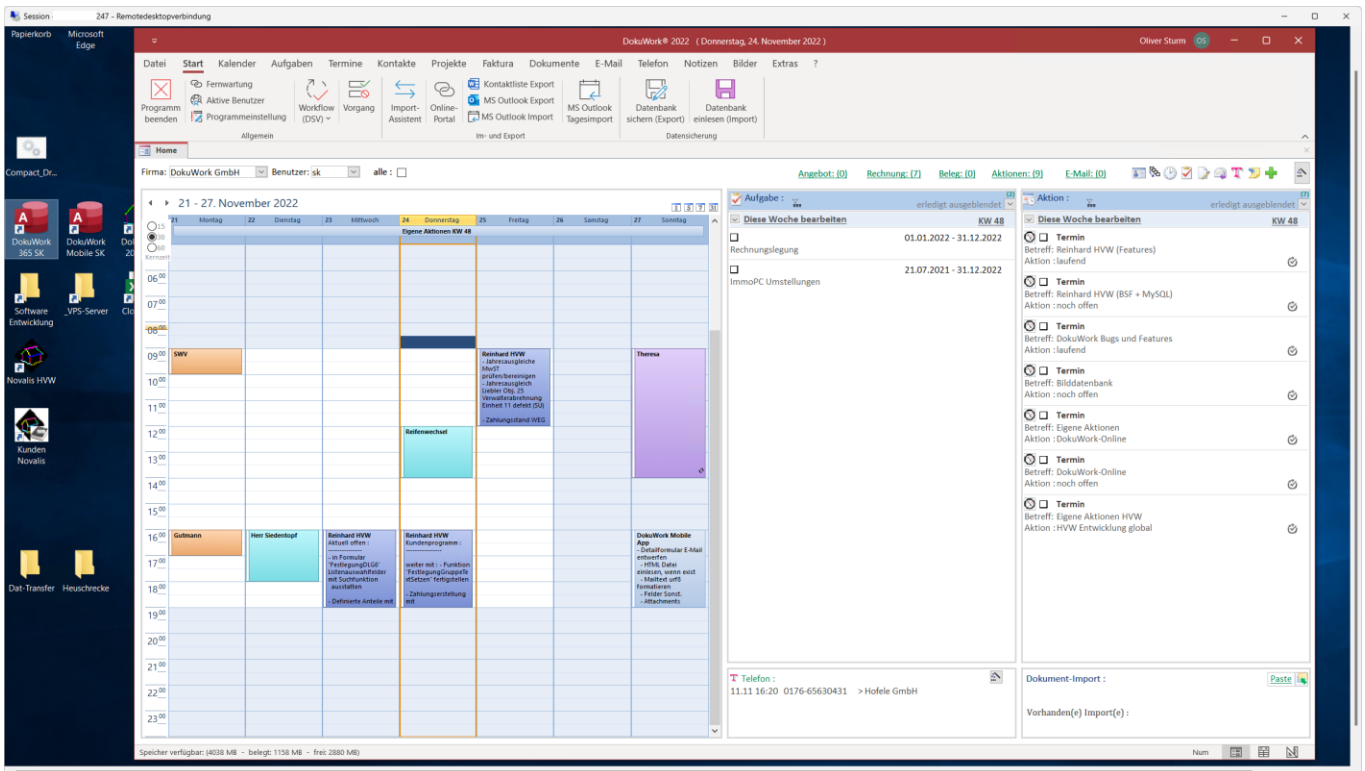
The Power Platform with Power BI and Dataverse is completely unsuitable for millions (if not billions) of small and micro businesses, freelancers, insurance agents, etc. worldwide to use it to productively bring Access applications (or other desktop applications) to the smartphone.

It is more suitable (only) for corporations and larger companies with appropriate corporate IT and especially whenever there are no special requirements for design and functionality for the frontend on the smartphone.

The "small ones" use virtual remote systems as a substitute (instead of Azure, PowerBI, Dataverse, etc.), which are provided from a data center or from their own terminal servers. Each user has his own desktop, which he can get on his terminal device anywhere in the world. It doesn't matter whether Android, Apple or Windows is running on the end device.

As long as at least one laptop is available, this is not a problem.

Example of RDP desktop from data center with Access Frontend:



On the smartphone, however, you can forget about the desktop. At best, 600 x 1200 pixels (without magnifying glass) can be displayed reasonably there. Thus, this "normal" RDP application is not very practical on the smartphone.

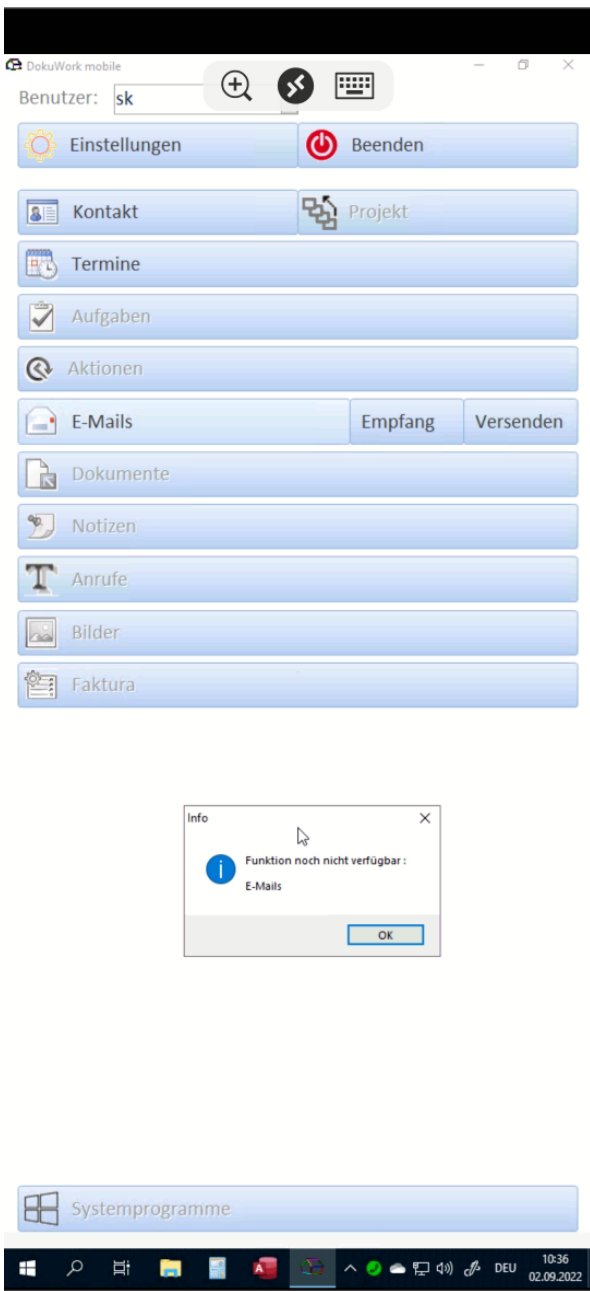
However, it is possible to transfer practically any Access desktop solution into a solution specially adapted for the smartphone with relatively little adaptation effort. All you have to do is control the window sizes of the forms and reports individually and generally increase the font sizes (default = 14 instead of 11).

And usually not everything has to run on the smartphone that is available in the office.

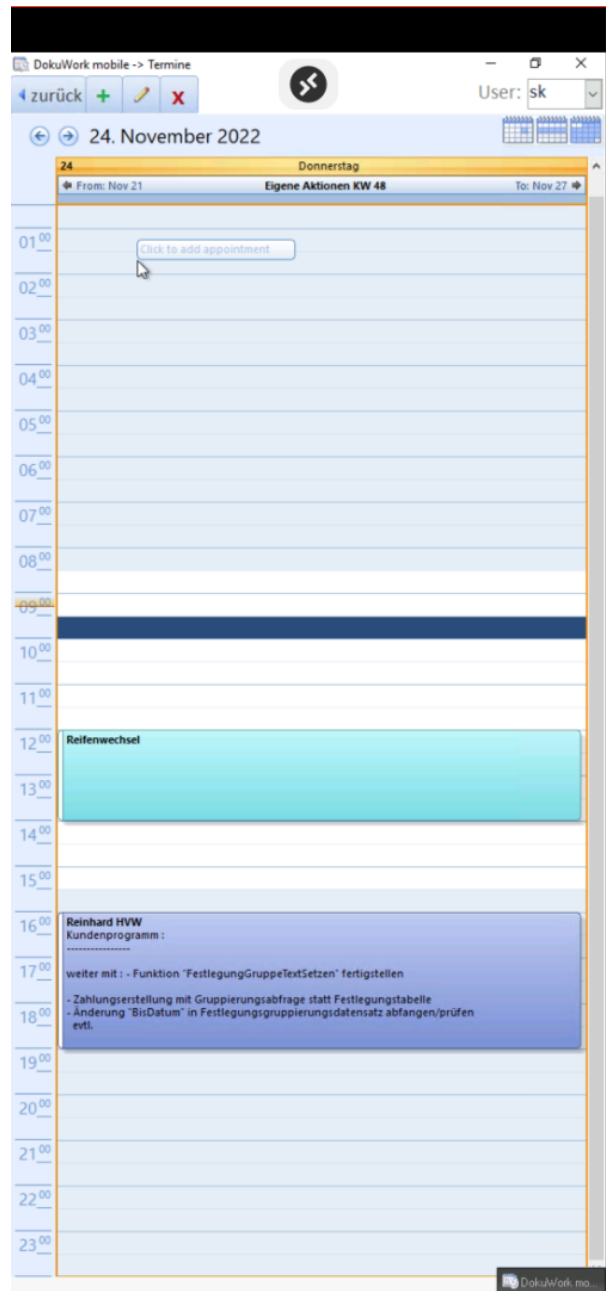
This smartphone access application is then made available as a RemoteApp.

Example of RDP RemoteApp on smartphone (600 x 1200) :

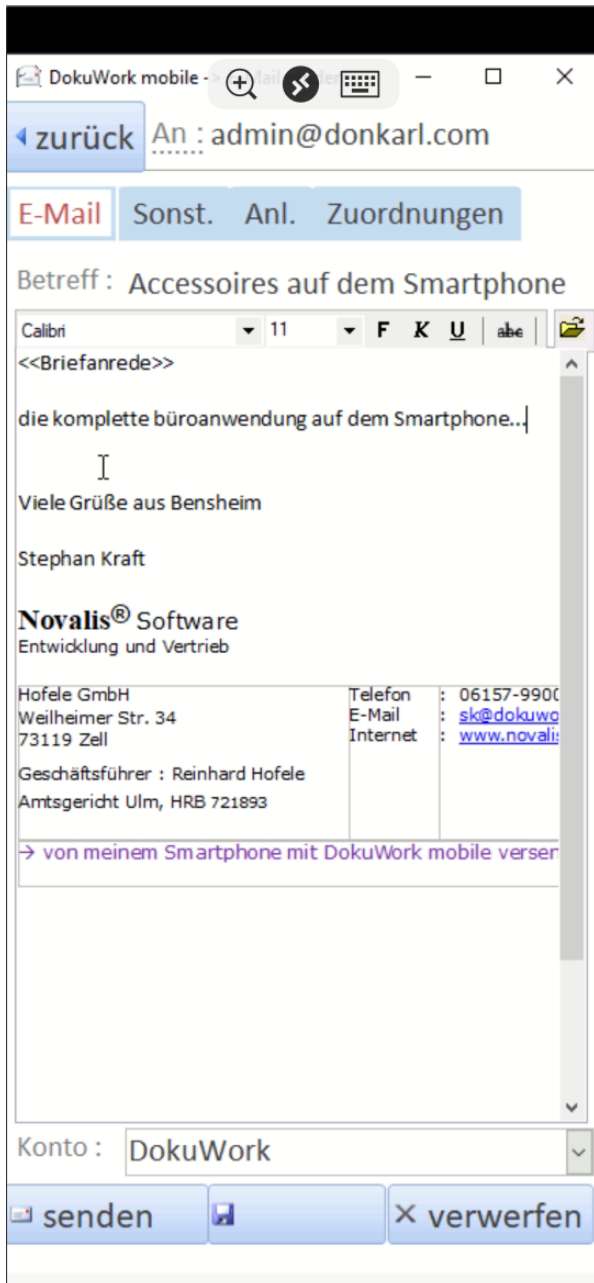
### MS Access Frontend Startform



### MS Access Frontend Calendar



# MS Access Frontend send E-Mail



Autor :

Stephan Kraft